

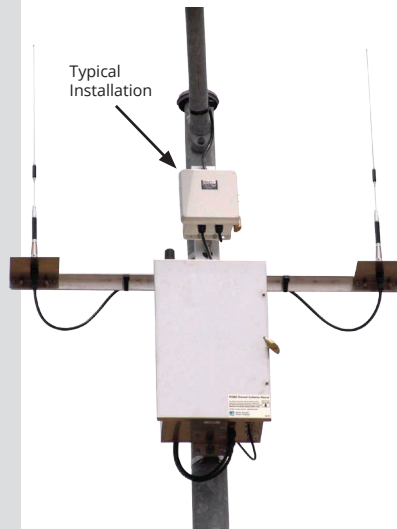
Twist-Lock Ancillary Power Tap With Multi-tap Transformer

Typical Applications

Use For Powering:
 Decorative Holiday Lighting,
 Wi Fi Hot Spots,
 Monitoring Systems,
 Cameras, Radios

Exclusive Features

Always On
 Photocontrol maintains normal operation
 Draws Power Directly From Streetlight Luminaires
 Simple Twist-lock Mounting Into Existing Twist-lock Outlet
 No Hard Wiring Required
 Universal Plug and Receptacle
 Heavy Duty, Utility Grade, Built For Harsh Outdoor Elements and Environment



For Convenient Access To 120 Volt Ancillary Power From Lighting Poles

Use for powering:

Decorative Holiday Lighting
 Wi Fi (802.11) Hot Spots
 Monitoring Systems
 Cameras, Radios

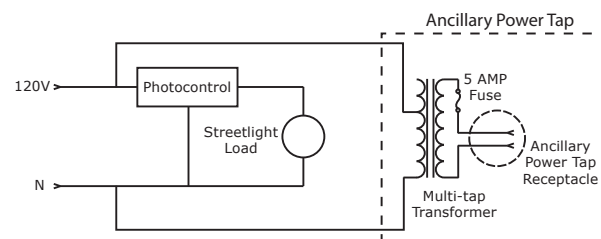


	5842-14/8-2
Configuration	Always On Photocontrol maintains normal operation
Primary Voltage Taps 60 Hz	208 / 230 / 277 / 480
Secondary Voltage 60 Hz	120
Cord Length	14 Feet - photocontrol base to transformer box; 8 feet - box to 2-prong receptacle (Standard) - Other cord lengths available
Cord Connection	2-prong receptacle (Standard) - Pigtail or other connections available
Transformer Load Rating	50 VA
Transformer Fuse	5 amp, slow blow
Transformer Enclosure	NEMA 4X (weatherproof), Fiberglass Reinforced Polyester Height 7-5/16" (186mm), Width 7-5/16" (186mm), Depth 5" (127mm)
Photocontrol Base	Standard 3-prong twist-lock per ANSI C136.10
Power Tap Housing	3-1/2" Diameter Polypropylene
Operating Temperature	-40C to +70C (-40F to +158F)
Dielectric Strength	5000 Volts between current carrying parts and metal surfaces

Meets or exceeds rigid quality requirements of applicable ANSI C136.10, and C136.24 and C136.41

Phone: (803) 939-4700
 Fax: (803) 939-4777
 Email: info@RipleyLightingControls.com

www.RipleyLightingControls.com



© 2021 by Ripley Lighting Controls, a Unit of Electroschwitch. All rights reserved. The information in this document is provided for informational use only and is subject to change without notice.