

Twist-Lock Electronic Photocontrol  
**PhotoClock II®**  
*Patented*

**Exclusive Features**

**ZCS TECHNOLOGY**  
Zero Cross Switching

7 Day Programmable



GPS Time Receiver



**Self-Healing Relay**

**3**  
**Tier Power Supply**  
**Technology**

Addresses current issues of:

- Lighting Curfews
- Dark Sky Initiative
- California Title 24
- Federal Energy Act 2005
- Canadian Industry Program for Energy Conservation (CIPEC)

Meets or exceeds rigid quality requirements of applicable ANSI C136.10, and C136.24 and C136.41

Phone: (803) 939-4700  
Fax: (803) 939-4777  
Email: info@RipleyLightingControls.com

[www.RipleyLightingControls.com](http://www.RipleyLightingControls.com)



**Energy Management**  
**Made Easy**

**Next Generation Photoclock**  
**with Advanced Technologies**

Stand-Alone Energy Management

Value Priced Solution

World-Wide Coverage - Ready to deploy with NO complex commissioning or networks to maintain

GPS Time Receiver - Sub-Second Accuracy

7 Day Versatile Programmability with Simple Configuration

	<b>RC8744</b>	<b>RC8794</b>
Nominal Voltage 60 Hz	120/208/240/277	480
Voltage Range	105—305	480
Fail Mode	On	
Load Rating	1000 Watt Tungsten / 1800 VA Ballast / LED Applicable	
Operating Temperature	-40C to +70C (-40F to +158F)	
Tru-Filter	Tru-Filter® Technology	
Dielectric Strength	5000 Volts between current carrying parts and metal surfaces	
Surge Protection	420 Joule MOV / 22,000 amp surge current	570 Joule MOV / 22,000 amp surge current
Power Consumption	0.7 watts @ 120 V	
Time Delay Off (Instant On)	5 seconds	
Operating Light Levels (Standard Settings)	Turn On 2.6 FC ± .25 / Turn Off by 3.9 FC (Off:On Ratio = 1.5:1)	
ANSI Color Coded Cover	Black	Yellow
Sync-Time (TTF)	(TTF) GPS Timed to 1st Fix-Sub Second Accuracy (typically less than 2 minutes)	
PC / Mac Applicable	Utilizing an Optional Ripley Interface Cable	
7 Day Programmability	Customizable up to 6 Daily Events (4 times)	
Standard Factory Settings	Setting Specific to Time Zone (On @ Dusk / Off @ Midnight / On @ 5AM / Off @ Dawn)	
Custom Setting Options Available	Call Factory to Select Customized settings	
Applicable with		

**Standard Time Zone Part Numbers**

- RC87XX-E000-2.6 - Eastern
- RC87XX-C000-2.6 - Central
- RC87XX-M000-2.6 - Mountain
- RC87XX-P000-2.6 - Pacific



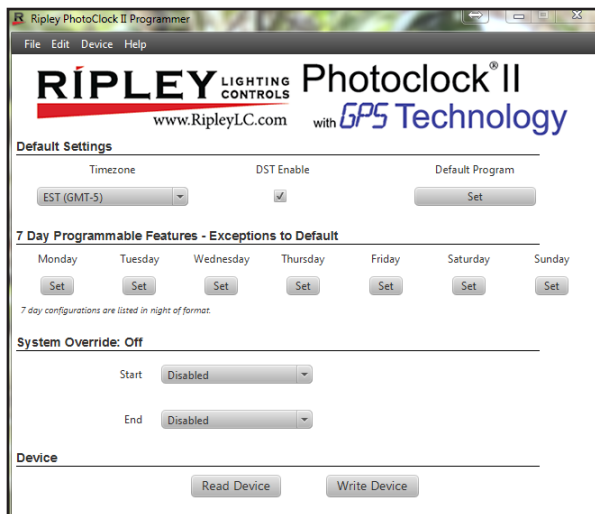


Twist-Lock Electronic Photocontrol  
**PhotoClock II Series**  
*Patented*

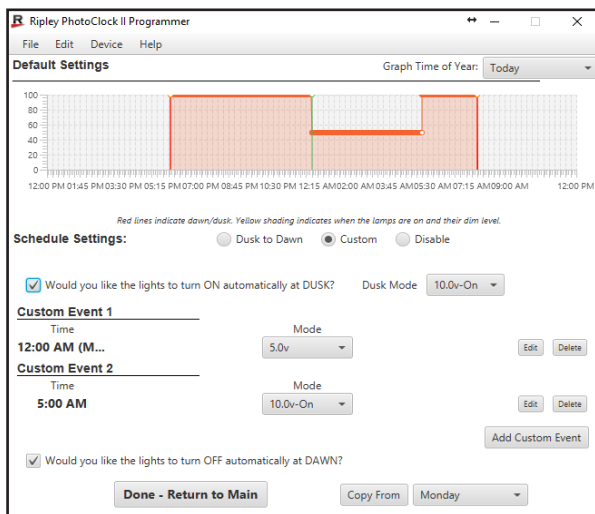
**Versatile Programmability**

Six Customizable Daily (seven day programmable) events easily configured utilizing PC/MAC Software and optional Ripley Interface Cable

*For additional information and help log on to [www.photoclocksupport.com](http://www.photoclocksupport.com)*



**Fig. 1** Application Main Screen



**Fig. 2** Customizable Program Screen

**Simple Setup**

Customer Programmable or Factory Set  
 Flexible Programming Options

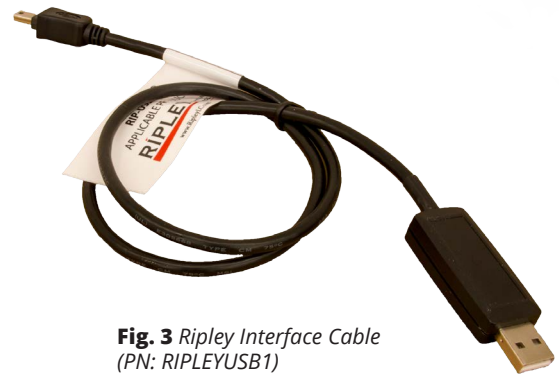
**System Override Off (Seasonal Operation)**

Minimizes disorientation of Wildlife  
 City, State and National Parks and Recreation Areas

**Individual Day Scheduling**

Government - Retail - Manufacturing  
 Educational - Institutional - Medical

**Ripley Interface cable** is custom designed to supply power to the unit for programming



**Fig. 3** Ripley Interface Cable  
 (PN: RIPLEYUSB1)  
 Sold Separately



Phone: (803) 939-4700  
 Fax: (803) 939-4777  
 Email: [info@RipleyLightingControls.com](mailto:info@RipleyLightingControls.com)

© 2021 by Ripley Lighting Controls, a Unit of Electroswitch. All rights reserved. The information in this document is provided for informational use only and is subject to change without notice.

[www.RipleyLightingControls.com](http://www.RipleyLightingControls.com)

DOC: R110821.3