



Twist-Lock Receptacles & Brackets

Available in Standard or ANSI C136.41 (7-Pin)

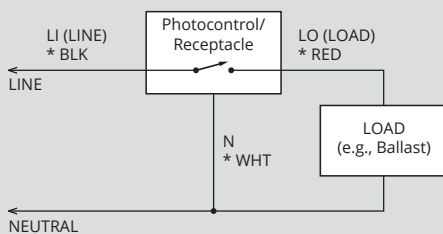


ANSI C136.41 (7-Pin)



Standard

Lead Wires Are Color Coded
Common: White
Line: Black
Load: Red



* RECEPTACLE LEAD COLORS

Typical Wiring

Meets or exceeds rigid quality requirements of applicable ANSI C136.10, C136.24 and C136.41

Phone: (803) 939-4700
Fax: (803) 939-4777
Email: info@RipleyLightingControls.com

www.RipleyLightingControls.com



5927 / 7927

Receptacle With Cast Housing
Includes Mounting Bracket
For Vertical Surface Mounting
3 #14 AWG, 14" Leads
4-1/2" Bracket



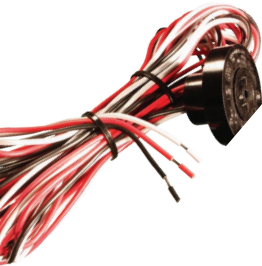
5927-L / 7927-L

Receptacle With Cast Housing
Includes Mounting Bracket
For Vertical Surface Mounting
3 #14 AWG, 14" Leads
8" Bracket



5926 / 7926

Receptacle With Cast Housing
No Mounting Bracket
For 1/2" NPT Conduit Knock-out Mounting
1/2" Conduit Lock-ring Included
3 #14 AWG, 14" Leads



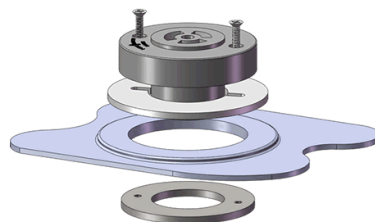
5241-2 / 7241-2

Receptacle Only
No Housing, No Mounting Bracket
For Enclosure Mounting
3 #14 AWG, 14" Leads
Mounts With 2 #6 Screws (Not Included)
Gasket Not Included
Requires 1-7/16" Mounting Hole



5241-2-20 / Call for Availability

Receptacle Only
No Housing, No Mounting Bracket
For Enclosure Mounting
3 #14 AWG, 20' Leads
Mounts With 2 #6 Screws (Not Included)
Gasket Not Included
Requires 1-7/16" Mounting Hole



5928 / 7928

360° Receptacle Mounting Kit
Provides for 360° Degrees of Rotation
Includes a 5241-2 Receptacle and Mounting Hardware

