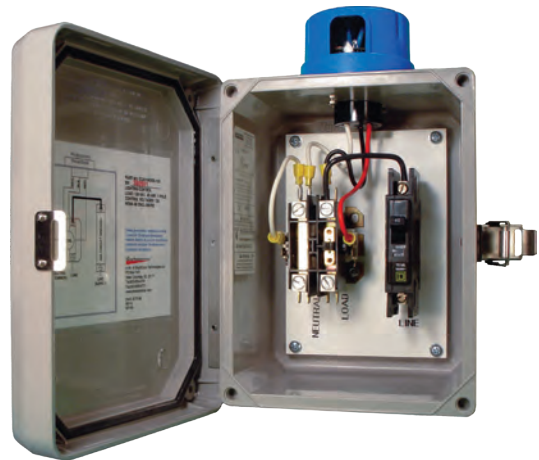
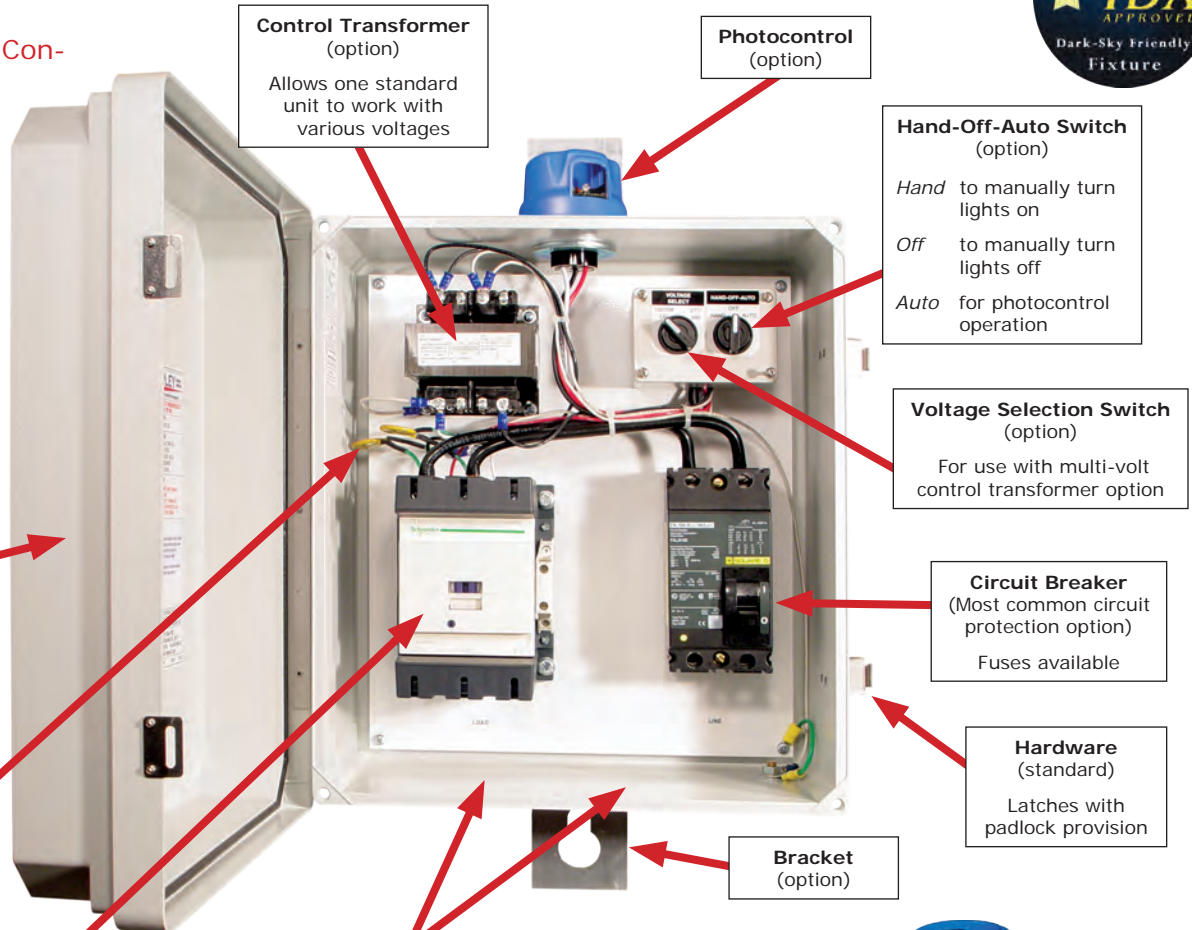




Please refer to the Lighting Contactor Controller product sheet for information on

Contactor Controller with 120 amp 2 pole contactor, 100 amp circuit breaker, multi-volt control transformer, voltage selection switch, Hand-Off-Auto Switch,



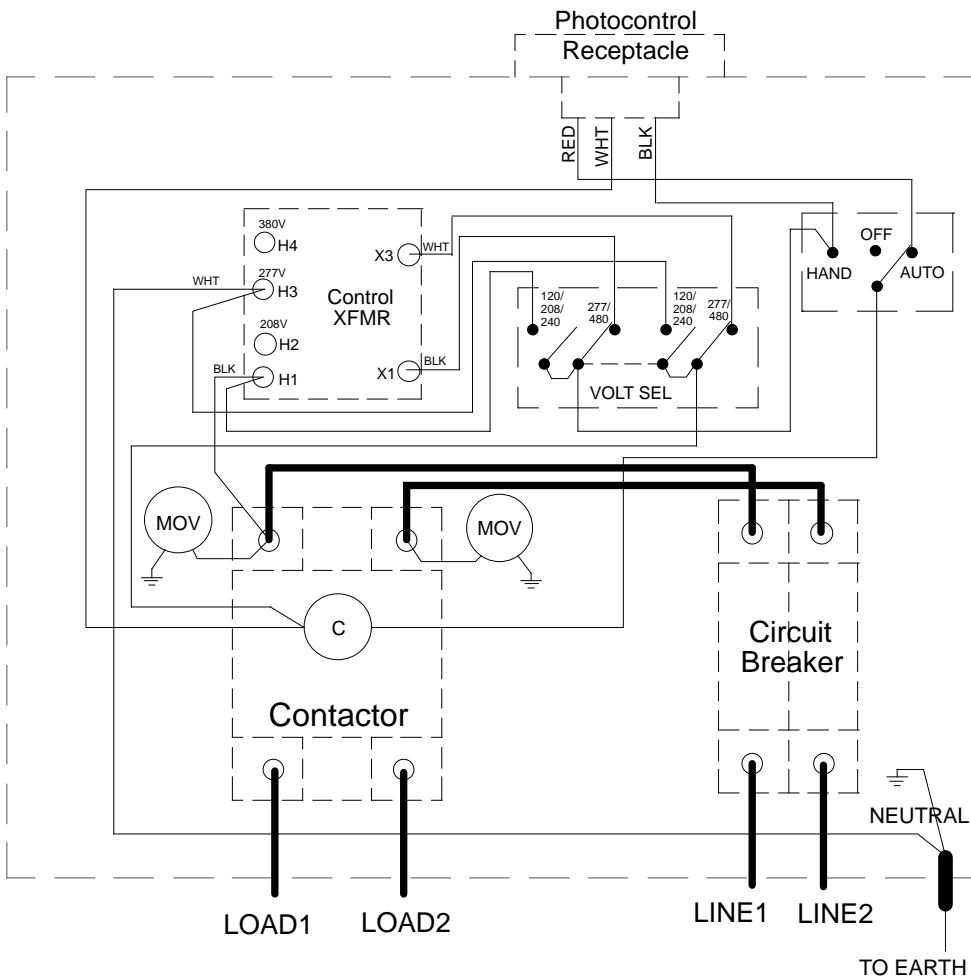
Contactor Controller with 40 amp 1 pole contactor, 40 amp circuit breaker, and photocontrol

Enclosure External Dimensions:

Typical Configuration	Height	Width	Depth
100 amp	17.31"	15.30"	8.19"
60 amp	13.3"	11.29"	5.58"
30/40 amp	9.30"	7.31"	4.96"

Phone: 803-939-4700
 Fax: 803-939-4777
 E-mail: Sales@RipleyLC.com

www.RipleyLC.com



PART NO: CC1002NOEKSTZ-120-480

SN: 370501

LIGHTING CONTROL

LOAD: 600 VAC MAX, 100 AMP, 2 POLE

CONTROL VOLTAGES: 120/208/240

or 277/480 (NEUTRAL IS REQUIRED)

NEMA 4X ENCLOSURE

CAUTION:

ALL TRANSFORMER (XFMR) TERMINALS WILL HAVE VOLTAGE. FOR EXAMPLE, A 277 V TERMINAL WILL HAVE 277 VOLTS, EVEN WITHOUT A LEAD CONNECTING TO THAT TERMINAL.

Rotate photocontrol receptacle to North if possible. Do not aim photocontrol window directly at walls or other objects which will not allow the photocontrol to properly see daylight.

RIPLEY LIGHTING CONTROLS

DIVISION OF SOUTHCONN TECHNOLOGIES INC

PO Box 7421

West Columbia, SC 29171

Tel:803-939-4700

Fax:803-939-4777

www.photocontrols.com

DWG: SCT2115

REV:3

6/17/05

Typical Schematic Wiring Diagram For Lighting Contactor Controller

As pictured in the top photograph on previous page.

(Diagram will vary depending on model and options selected.)

Please refer to the Lighting Contactor Controller product sheet for information on the various models and options that are available.

Phone: 803-939-4700
 Fax: 803-939-4777
 E-mail: Sales@RipleyLC.com

www.RipleyLC.com