

Twist-Lock Electronic Photocontrol **PhotoClock II®** *Patented*

Exclusive Features

ZCS TECHNOLOGY
Zero Cross Switching

7 Day Programmable



GPS Time Receiver



Self-Healing Relay

3
Tier Power Supply
Technology

Addresses current issues of:

Lighting Curfews
Dark Sky Initiative
California Title 24
Federal Energy Act 2005
Canadian Industry Program for
Energy Conservation
(CIPEC)

Meets or exceeds rigid
quality requirements of
applicable ANSI C136.10,
and C136.24 and C136.41

Phone: (803) 939-4700
Fax: (803) 939-4777
Email: info@RipleyLightingControls.com

www.RipleyLightingControls.com



**Energy Management
Made Easy**

**Next Generation Photoclock
with Advanced Technologies**

Stand-Alone Energy Management

Value Priced Solution

World-Wide Coverage - Ready to deploy with
NO complex commissioning or networks to
maintain

GPS Time Receiver - Sub-Second Accuracy

7 Day Versatile Programmability with Simple
Configuration

	RC8744D-X000-2.6
Nominal Voltage 60 Hz	120/208/240/277
Voltage Range	105-305 VAC
Fail Mode	On
Load Rating	1000 Watt Tungsten / 1800 VA Ballast / LED Applicable
Operating Temperature	-40C to +70C (-40F to +158F)
Tru-Filter	Tru-Filter® Technology
Dielectric Strength	5000 Volts between current carrying parts and metal surfaces
Surge Protection	420 Joule MOV / 22,000 amp surge current
Power Consumption	0.7 watts @ 120 V
Time Delay Off (Instant On)	5 seconds
Operating Light Levels (Standard Settings)	Turn On 2.6 FC ± .25 / Turn Off by 3.9 FC (Off:On Ratio = 1.5:1)
ANSI Color Coded Cover	Black
Sync-Time (TTFF)	(TTFF) GPS Timed to 1st Fix-Sub Second Accuracy (typically less than 2 minutes)
PC / Mac Applicable	Utilizing an Optional Ripley Interface Cable
7 Day Programmability	Customizable up to 6 Daily Events (4 times)
Standard Factory Settings	Setting Specific to Time Zone (On @ Dusk / Off @ Midnight / On @ 5AM / Off @ Dawn)
Custom Setting Options Available	Call Factory to Select Customized settings
Applicable with	

Standard Time Zone Part Numbers

RC8744D-E000-2.6 - Eastern
RC8744D-C000-2.6 - Central
RC8744D-M000-2.6 - Mountain
RC8744D-P000-2.6 - Pacific
RC8744D-A000-2.6 - Alaska
RC8744D-H000-2.6 - Hawaii
RC8744D-I000-2.6 - International



DOC: R091922.3



Versatile Programmability

Six Customizable Daily (seven day programmable) events easily configured utilizing PC/MAC Software and optional Ripley Interface Cable

For additional information and help log on to www.photoclocksupport.com

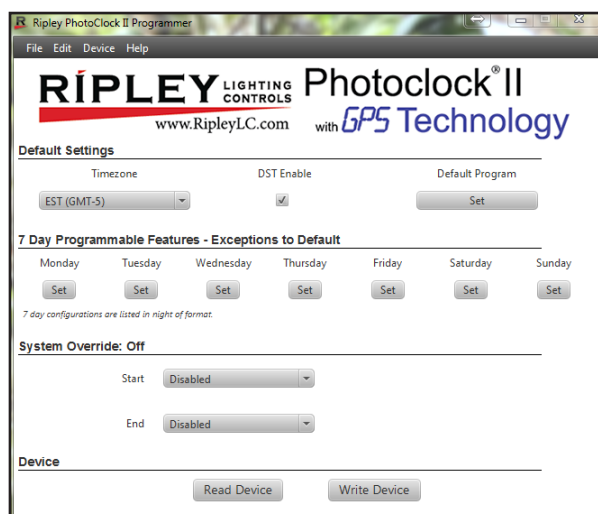


Fig. 1 Application Main Screen

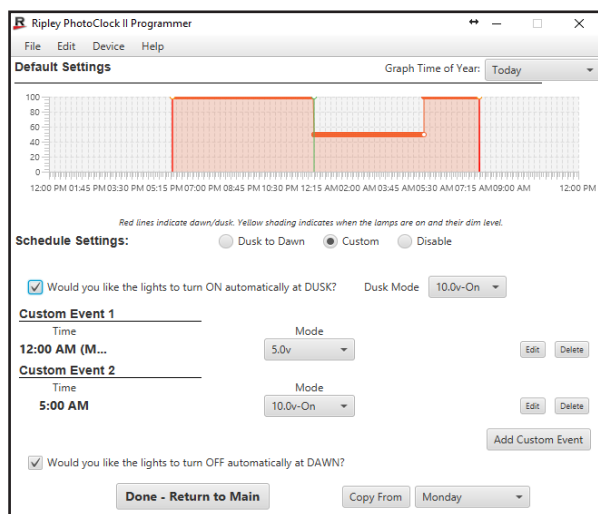


Fig. 2 Customizable Program Screen

Simple Setup

Customer Programmable or Factory Set
Flexible Programming Options

System Override Off (Seasonal Operation)

Minimizes disorientation of Wildlife
City, State and National Parks and Recreation Areas

Individual Day Scheduling

Government - Retail - Manufacturing
Educational - Institutional - Medical

Ripley Interface cable is custom designed to supply power to the unit for programming

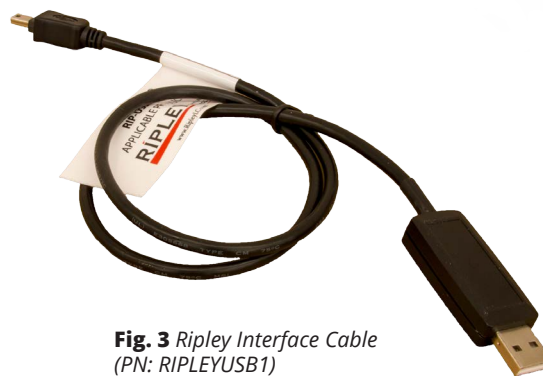


Fig. 3 Ripley Interface Cable
(PN: RIPLEYUSB1)
Sold Separately



Phone: (803) 939-4700
Fax: (803) 939-4777
Email: info@RipleyLightingControls.com

www.RipleyLightingControls.com

© 2021 by Ripley Lighting Controls, a Unit of Electroswitch. All rights reserved. The information in this document is provided for informational use only and is subject to change without notice.

DOC: R091922.3