

Twist-Lock Electronic Photocontrol
FAA

Exclusive Features

Double-Sided
Plated-Through
Circuit Board (DSPT)
for durability and reliability

Quad-Gate Technology
for precision
and consistency

Full Wave Rectification
(AC Models)

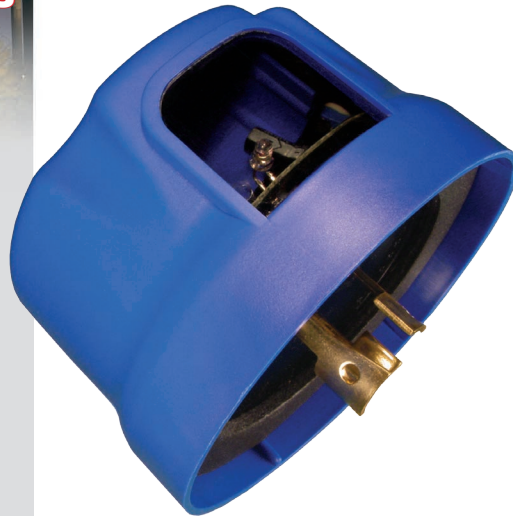
Dual Zener Diodes

High Impact
Thermoplastic Base

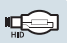

Solid Brass Contact Blades

UV Stabilized Permanent Color,
High Impact Resistant
Polypropylene Cover

Meets or exceeds rigid
quality requirements of
applicable ANSI C136.10,
and C136.24 and C136.41



Complies with
AC No. 150/5345-43E, dated 10/19/95

	6390-FAA	6589C-FAA	6390-FAA 2
Nominal Voltage (AC Models 60 Hz)	120/208 240/277	12—48 (DC)	120/208 240/277
Voltage Range	105—305	12.5—52 (DC)	105—305
Fail Mode	On		
Load Rating	1000 Watt Tungsten / 1800 VA Ballast	10 Amp	1000 Watt Tungsten / 1800 VA Ballast
Operating Temperature	-40C to +70C (-40F to +158F)	-40C to +70C (-40F to +158F)	-40C to +70C (-40F to +158F)
Photocell	Encapsulated Silicon	Cadmium Sulfide	Encapsulated Silicon
Dielectric Strength	5000 Volts between current carrying parts and metal surfaces		
Surge Protection	320 Joule MOV / 10,000 amp surge current	50 Joule MOV / 10,000 amp surge current	320 Joule MOV / 10,000 amp surge current
Power Consumption	0.5 watts @ lowest nominal voltage		
Time Delay Off (Instant On)	3 to 5 seconds		
Operating Light Levels (Standard Settings)	Turn On @ 35 FC ± .25 / Turn Off @ 52 FC		Turn On @ 2 FC Turn Off by 5 FC
ANSI Color Coded Cover	Blue	Green	Black
Applicable with	 		

LIMITED WARRANTY: 3 years from date of manufacture

Units comply with applicable requirements of U.S. Department of Transportation, Federal Aviation Administration, Advisory Circular, Specification for Obstruction Lighting Equipment, AC No. 150/5345-43E, dated 10/19/95.

Phone: (803) 939-4700
Fax: (803) 939-4777
Email: info@RipleyLightingControls.com



www.RipleyLightingControls.com

Meets or exceeds rigid quality requirements of applicable ANSI C136.10, and C136.24 and C136.41

DOC: R081221.11